

HSC 6506 Epidemiology

Fall 2021

Professor: Delores. James, PhD, RDN, LDN, FAND
Office Hours: Tues 10:30-11:30 (email chat); 1:30-2:30 (Zoom); Thurs 10:30-11:30 (Zoom); appointments as needed
Office/Phone: Room 10 FLG, (352) 294-1806
Email: Please do all class email through Canvas
Tech Support: UF HELP Desk at (352) 392-HELP



COURSE OVERVIEW

Epidemiology is one of the basic disciplines of public health. One of the tasks of epidemiology is to unravel the risk factors of disease at the population level. The course will teach how to evaluate relationships between potential risk factors and health outcomes and how causal relationships are interpreted for public health decision making. This course will also provide a comprehensive understanding of sources of population data in terms of morbidity, mortality, and other vital statistics. Scientific methods for approaching population data and identifying public health problems and empirical analysis of data will be emphasized.

This is an online course. Thus, all course instruction and communication are done through Canvas. Students are expected to own a computer with a webcam and be proficient in several programs, including Microsoft Office Professional Suite (Word, Excel, PowerPoint, Publisher). These and other programs are available free to all UF students at <http://info.apps.ufl.edu/>

EPIDEMIOLOGY CORE COMPETENCIES

Association of Schools and Programs of Public Health

By the end of the course, students will be able to:

- Identify key sources of data for epidemiologic purposes.
- Identify the principles and limitations of public health screening programs.
- Describe a public health problem in terms of magnitude, person, time and place.
- Explain the importance of epidemiology for informing scientific, ethical, economic and political discussion of health issues.
- Comprehend basic ethical and legal principles pertaining to the collection, maintenance, use and dissemination of epidemiologic data.
- Apply the basic terminology and definitions of epidemiology.
- Calculate basic epidemiologic measures.
- Communicate epidemiologic information to lay and professional audiences.
- Draw appropriate inferences from epidemiologic data.
- Evaluate the strengths and limitations of epidemiologic reports.

TEXTS

1. Friis, R.H. & Sellers, T.A. (2020). Epidemiology for Public Health Practice, 6th ed. Jones and Bartlett. The eBook is available through UF All Access as well as www.vitalsource.com for immediate access.
2. Additional readings and course materials are available on Canvas.

STATEMENT ON DIVERSITY AND INCLUSION

Given the sensitive and challenging nature of the material discussed in class, it is imperative that there be an atmosphere of trust and safety in our learning environment. I will attempt to foster an environment in which each person is able to hear and respect each other. It is critical that each person show respect for all worldviews expressed in class. It is expected that some of the material in this course may evoke strong emotions, please be respectful of others' emotions and be mindful of your own. Please let me know if something said or done in the classroom, by either myself or other students, is particularly troubling or causes discomfort or offense. While our intention may not be to cause discomfort or offense, the impact of what happens throughout the course is not to be ignored and is something that I consider to be very important and deserving of attention.

It is my intent to present materials and activities that are respectful of diversity: gender identity, sexuality, disability, age, socioeconomic status, ethnicity, race, nationality, religion, and culture. Your suggestions are encouraged and appreciated. Please let me know ways to improve the effectiveness of the course for you personally, or for other students or student groups.

TECH SUPPORT

We understand that computer problems are a fact of life. However, your instructor will not be troubleshooting problems with your computer or Internet. For technical difficulties with the course website, please contact the UF Help desk at helpdesk@ufl.edu or (352) 392-HELP.

WIFI CONNECTION VIA EDUROAM

Students can connect nationally and internationally via the UF on-campus wifi, **eduroam**, for free with GatorLink log-in credentials. The eduroam network is fast and secure and has more than 10,000 wi-fi hotspots in 106 countries and territories worldwide.

How to connect to eduroam:

1. If you can get a Wi-Fi signal at any of the eduroam locations (see below) and your mobile device (laptop, smartphone, or tablet) has already been configured for eduroam, then you will automatically connect.
2. Otherwise, follow the instructions for connecting here: <https://helpdesk.ufl.edu/connecting-to-eduroam-off-campus/>.



There are more than 100 Wi-Fi hotspots in Florida, including several state university campuses and community colleges. You don't have to sit in a car--many locations have open spaces and communal rooms available so you can get online while socially distancing and following CDC guidelines in an air-conditioned space.

Also, in Florida all of the UF/IFAS Research and Education Centers (REC) are equipped with eduroam, so if you live in a rural area of your county you can visit an REC to securely watch course videos and take care of your academic needs. **Here's a link to all the eduroam sites in the U.S.:** <https://incommon.org/eduroam/eduroam-u-s-locator-map/>

CONNECTING VIA ZOOM

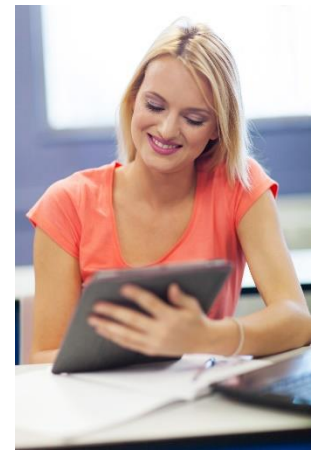
Office hours will be conducted via Zoom. If there is a guest speaker or special live session, an audio-visual recording will be recorded for students who are unable to attend live. Students who

participate with their camera engaged or utilize a profile image are agreeing to have their video or image recorded.

If you are unwilling to consent to have your profile or video image recorded, be sure to keep your camera off and do not use a profile image. Likewise, students who un-mute during class and participate orally are agreeing to have their voices recorded. If you are not willing to consent to have your voice recorded during class, you will need to keep your mute button activated and communicate exclusively using the "chat" feature, which allows students to type questions and comments live. The chat will not be recorded or shared. As in all courses, unauthorized recording and unauthorized sharing of recorded materials is prohibited.

CLASS POLICIES

- **Emails.** All class emails will be done via Canvas, not through the instructor's UF email account. Emails will be returned within 24 hours during regular business hours (9 am to 5 pm) Monday through Friday.
- **Special Accommodations:** "Students with disabilities requesting accommodations should first register with the Disability Resource Center (352-392-8565, www.dso.ufl.edu/drc/) by providing appropriate documentation. Students who need special accommodations should follow this procedure as early as possible in the semester. I am asking that you notify me of any accommodation letter as early in the semester as possible, but ideally by the second week. This will allow us to have an action plan as soon as possible.
- **Academic Honesty:** "The University of Florida requires all members of its community to be honest in all their endeavors. Students are required to commit themselves to the highest standard of honor and integrity by abiding by the Honor Code on all work submitted, The following pledge is either required or implied: *"On my honor, I have neither given nor received unauthorized aid in doing this assignment."* Violations of the UF Academic Honesty Guidelines will not be tolerated and shall be treated in accordance with the [UF Student Honor Code](#).
- **Assignment Submission:** Late assignments will be accepted within 24 hours of the deadline, but with a 50% penalty. You can always turn in an assignment early.
- **Student Athletes:** Student athletes are required to provide the instructor with written documentation of away games that are in conflict with exams as early in the semester as possible.
- **Evaluations.** Students can provide professional and respected feedback on the quality of instruction in this course by completing online evaluations via GatorEvals at <https://evaluations.ufl.edu>. Students will be notified when the evaluation period opens and can be completed in the Canvas course menu. Summary results of these assessments are available to students at <https://evaluations.ufl.edu/results/>.
- **Publishing and Recording Class Materials.** This is an online course. Thus, students are allowed to use all written, video and audio course material and recordings for 1) personal educational use, 2) in connection with a complaint to the university, or 3) as evidence in, or in preparation for, a criminal or civil proceeding. All other purposes are prohibited. Specifically, students may not publish recorded lectures or other course materials without the written consent of the instructor. Publication of course materials without permission of the instructor is prohibited. To "publish" means to share, transmit, circulate, distribute, or provide access to a recording, regardless of format or medium to another person, including classmates. Furthermore, it is prohibited to publish course materials to any media platform,



appropriate language in discussion posts, having a respectful attitude toward the instructor, not asking for extra points/credits; and respecting class policies. Professionalism is a subjective assessment and the final point value will be determined by the instructor at the end of the semester.

Hump Day Inspirational Video

An inspirational video will be posted under the announcement link each Wednesday. Please respond/comment or create your own inspirational message.

Yellowdig Community Participation. Yellowdig is an online conversation platform for this course that contributes to your interaction and participation points. It encourages engagement, casual conversation, and the exchange of ideas. You receive points for participating in Yellowdig posts and conversations, and those points factor into your final grade. More information is under the assignment section of the syllabus and on the website.

EXAMS (3@ 75 possible points each=225 points)

Students are expected to synthesize and integrate the information presented in the lectures, readings, videos, and other supplemental materials. Exams and quizzes will consist of multiple choice, true/false, matching, and fill-in-the-blanks. Quizzes are open book. However, please do not underestimate the difficulty of these quizzes. Exams are open book and students have **2 attempts** that must be completed on the same day. Please note that the second attempt is optional. Please contact the UF HELP Desk if you encounter technical problems during an exam.



ASSIGNMENTS

A. Video Assignments

Personal Video Introduction (5 points). Students are required to make a video introduction (2 to 3 minutes) of themselves to the class and post it to the discussion board. Please put your introduction under the appropriate discussion link and by the date indicated on the syllabus. Introductions must be video-taped and all of the questions must be answered to get the full points. **Videos can be done with your web cam and uploaded directly into Canvas; or you can do it with your cellphone, upload it to YouTube and then send the link.** You must respond to at least 3 video introductions. **Late assignments are accepted within 24 hours of the due date, but will automatically incur a 50% deduction (no exception).**

Video Reflection on Course (5 points). Students are required to do a **video reflections on a topic or issue that they have learned from the textbook, other readings, or assignment.** Your video post must be **3-5 minutes.** You must post the video at least 2 days before the video is due to receive full credit. You also must respond to **at least 3 postings from the class** by the due date. Your response to the posts must be at least **100 words.** **Please note the deadline for these assignments. You must do your post at least 2 days before the due date to give your classmates enough time to respond. Late assignments are accepted within 24 hours of the due date, but will automatically incur a 50% deduction (no exception).**

B. Weekly Questions from Text

Weekly Questions from Readings (0.5 points per question). Each student must turn in **5 multiple-choice questions from each book chapter assigned for the week**. If two chapters are assigned, then you must submit 6 questions, etc. Please provide 4 choices (A, B, C, D) for each question submitted. **The correct answer and the chapter and page number for each question must be given.** Each question is worth 0.5 points. Please submit the questions each week under the assignment link by the due date. About 25%-30% of the exam will be from questions submitted by students. Making up sample questions is a way to help you study and retain the information. Write the questions in the space provided online. Do your original post no later than the due date, and submit your response to classmates no later than 2 days later. **Late assignments are accepted within 24 hours of the due date, but will automatically incur a 50% deduction (no exception).**

C. Yellowdig Discussion

Yellowdig Health Discussion Board (100 points). Yellowdig is an online conversation platform for this course that contributes to your interaction and participation points. It encourages engagement, casual conversation, and the exchange of ideas on health-related topics relevant to the course. You receive points for participating in Yellowdig posts and conversations, and those points factor into your final grade.

Each week for **12 weeks (weeks 2 to 14)**, you will post and or comment on health stories in the news (article or video) that relate in some way to topics or vulnerable population groups covered in the course from a local, national, or international source. If you create a news post, then the link to the news article or video must be provided. You earn points by posting as well as commenting and to the posts done by others.

Please go to the course website under the Yellowdig assignment for more details about the guidelines and expectation. A link to the Yellowdig community is also linked in weeks 2-14. **Do not use Yellowdig to ask general questions about the course or the syllabus. Instead, email the instructor or another student.**

D. Mandatory UF Training

Mandatory Completion of IRB 803 Training (10 points). Students will complete the IRB 803 training and submit proof of completing and passing the assessment. Be sure to print a copy as a PDF file and save it. Upload a copy of the PDF file to the assignment link by the due date. If the IRB 803 was done in the past 3 years, then submit the PDF for it by the due date. **Late assignments are accepted within 24 hours of the due date, but will automatically incur a 50% deduction (no exception).** Complete the IRB 803 training from this link <http://irb.ufl.edu/index/requiredtraining.html>

Mandatory Completion of HIPPA Training (10 points). Students will complete the HIPPA training and submit proof of completing and passing the assessment. Be sure to print a copy as a PDF file and save it. Upload a copy of the PDF file to the assignment link by the due date. If the HIPAA training was done in the past 12 months, then submit the PDF for it by the due date. **Late assignments are accepted within 24 hours of the due date, but will automatically incur a**

50% deduction (no exception). Complete the HIPPA training by going to the <http://mytraining.hr.ufl.edu/> and search for HIPPA.

E. Project

Students will work in small groups of two or three

Annotated Bibliography (75 points). One of the more useful tools in conducting research is the annotated bibliography. An annotated bibliography combines the citations found in the References list at the end of documents in APA format with annotations about each of the sources. For this assignment, you will construct an annotated bibliography based upon an assigned topic that has a significant public health impact. More detailed information about the assignment is available on the website. **Late assignments are accepted within 24 hours of the due date, but will automatically incur a 50% deduction (no exception).**

Submit the report as a Word file with your name(s) and UF ID. The report will be about 25-30 pages (not including cover page or references at the back).

- Attractive cover (Title, image, name(s), course, etc.)
- Double space
- Each annotation on a separate page
- Times New Roman 12 font
- 200-word abstract
- APA 7 format (throughout, not just references)
- 25-30 sources, with 150 words each
- References



PowerPoint Presentation of Epidemiologic Investigation (50 points). Students will formulate a research presentation based on the findings from the literature review and create a PowerPoint slide presentation. Think of this as a presentation for an epidemiologist to use in a toolkit on the topic. The presentation will be graded on:

- The project goals
- Definition and significance of the research question(s)
- Overview of the methodology
- Significant findings, with appropriate charts, graphs, tables, etc.
- Public health implications of the findings
- Practical or clinical recommendations
- Attractiveness
- Design and layout
- Appropriate use of graphics
- 12-15 slides (not including title and references/resources)

TOPICS

Overdose

Chlamydia

Police Shootings of Unarmed Civilians

Air Pollution and Asthma

Colon Cancer and African Americans

COVID-19 Long-haulers

Intimate Partner Violence

Bullying and Suicide

Shingles

Health Effects of Coffee

GRADING SYSTEM

93%-100%=A	90%-92.999%=A-	87%-89.99%=B+	83%-86.99%=B
80%-82.99%=B-	77%-79.99%=C+	73%-76.99%=C	70%-72.99%=C-
67%-69.99%=D+	63%-66.99%=D	60%-62.99%=D-	0%-59.99%=E

UF's grading policy can be found at

<http://www.registrar.ufl.edu/catalog/policies/regulationgrades.html>.

Class Schedule*

Week 1 August 23-27		
Weekly Activities <ul style="list-style-type: none"> • Purchase textbook • Complete course contract • Post video introduction • Read the syllabus and check review website features • Email instructor via Canvas if you added the class • Read Ch 1 • Engage with course materials • Make up and submit exam questions for the week Lectures for the Week <ul style="list-style-type: none"> • Overview and Scope of Epidemiology • History of Epidemiology 	Readings Ch 1	Due Dates
Week 2 August 30-September 3		
Weekly Activities <ul style="list-style-type: none"> • Email instructor immediately via Canvas if you just added the class • Complete course contract • Post video introduction • Say "Hi" to your team member(s) • Engage with course materials • Read Ch 2 • Make up and exam questions for the week • Look for news item to post Lectures for the Week <ul style="list-style-type: none"> • Practical Applications of Epidemiology 	Ch 2	<ul style="list-style-type: none"> • Post video introduction by August 30 and respond by September 1 • Submit Ch 1 & 2 questions by September 2
Week 3 September 6-10		
Weekly Activities <ul style="list-style-type: none"> • Engage with course materials • Read Ch 3 • Make up and submit exam questions for the week • Start working on Annotated Bibliography • Labor Day Holiday September 6 	Ch 3	<ul style="list-style-type: none"> • Submit Ch 3 questions by September 9

Lectures for the Week <ul style="list-style-type: none"> Measures of Morbidity and Mortality 		
Week 4 September 13-17		
Weekly Activities <ul style="list-style-type: none"> Engage with course materials Read Ch 4 Make up exam questions for the week Start HIPPA online training Look for news item to post Lectures for the Week <ul style="list-style-type: none"> Descriptive Epidemiology 	Ch 4	<ul style="list-style-type: none"> Submit Ch 4 questions by September 16
Week 5 September 20-24		
Weekly Activities <ul style="list-style-type: none"> Engage with course materials Read Ch 5 Make up and submit exam questions for the week Submit proof of HIPPA training Submit discussion post 2 Continue working on Annotated Bibliography Prepare for Exam 1 Lectures for the Week <ul style="list-style-type: none"> Sources of Data 	Ch 5	<ul style="list-style-type: none"> Submit Ch 5 questions by September 23 HIPPA assignment due September 24
Week 6 September 27-October 1		
Weekly Activities <ul style="list-style-type: none"> Engage with course materials Read Ch 6 Make up and submit exam questions for the week Continue working on Annotated Bibliography Look for news item to post Exam 1 (Weeks 1-5) Lectures for the Week <ul style="list-style-type: none"> Ecologic, Cross-Sectional, and Case-Control Designs 	Ch 6	<ul style="list-style-type: none"> Exam 1 September 30 Submit Ch 6 questions by September 30
Week 7 October 4-8		
Weekly Activities <ul style="list-style-type: none"> Engage with course materials Read Ch 7 Submit Annotated Bibliography Begin preparing discussion post 3 Make up and submit exam questions for the week Homecoming October 8 Lectures for the Week <ul style="list-style-type: none"> Cohort Study Designs 	Ch 7	<ul style="list-style-type: none"> Annotated Bibliography due October 4 Submit Ch 7 questions by October 7

Week 8 October 11-15**Weekly Activities**

- Engage with course materials
- Read Ch 8
- Complete IRB 803 online training
- Look for news item to post
- Submit and respond to discussion post 3
- Make up and submit exam questions for the week

Lectures for the Week

- Experimental Study Designs
- Ethics in Research

Ch 8

- **Submit Ch 8 questions by October 14**

Week 9 October 18-22**Weekly Activities**

- Engage with course materials
- Read Ch 9
- Submit proof of IRB training
- Begin preparing discussion 4 post
- Make up and submit exam questions for the week

Lectures for the Week

- Measures of Effect

Ch 9

- **Submit IRB assignment October 22**
- **Submit Ch 9 questions by October 21**

Week 10 October 25-29**Weekly Activities**

- Engage with course materials
- Read Ch 10
- Make up and submit exam questions for the week
- Submit and respond to discussion post 4

Lectures for the Week

- Data Interpretation Issues

Ch 10

- **Submit Ch 10 questions by October 28**

Week 11 November 1-5**Weekly Activities**

- Engage with course materials
- Read Ch 11
- Make up and submit exam questions for the week
- Look for news item to post
- Exam 2 (Ch 6-10)

Lectures for the Week

- Screening for Diseases in the Community

Ch 11

- **Exam 2 November 4**
- **Submit Ch 11 questions by November 4**
- **Submit PowerPoint Presentation for feedback November 5**
- **(optional)**

Week 12 November 8-12**Weekly Activities**

- Engage with course materials
- Read Ch 12
- Presentations
- Make up and submit exam questions for the week
- **Veterans Day November 11**

Lectures for the Week

Ch 12

- **Submit Ch 12 questions by November 10**

<ul style="list-style-type: none"> Epidemiology of Infectious Diseases 		
Week 13 November 15-19		
Weekly Activities <ul style="list-style-type: none"> Engage with course materials Read Ch 13 & 14 Presentations Begin preparing discussion 5 post Make up and submit exam questions for the week Lectures for the Week <ul style="list-style-type: none"> Epidemiology of Work and the Environment Molecular and Genetic Epidemiology 	Ch 13 & 14	<ul style="list-style-type: none"> PowerPoint Presentation November 19 Submit Ch 13 & 14 questions November 18
Week 14 November 22-26		
Weekly Activities <ul style="list-style-type: none"> Engage with course materials Read Ch 15 Submit and respond to discussion post 5 Start working on video reflection assignment Make up and submit exam questions for the week Thanksgiving Break November 24-26 Lectures for the Week <ul style="list-style-type: none"> Psych, Behavioral, and Social Epidemiology 	Ch 15	<ul style="list-style-type: none"> Submit Ch 15 questions by November 23
Week 15 November 29-December 3		
Weekly Activities <ul style="list-style-type: none"> Engage with course materials Read Ch 16 & 17 Make up and submit exam questions for the week Prepare for Exam 3 Lectures for the Week <ul style="list-style-type: none"> Epidemiology as a Profession Epidemiology and Health Policy 	Ch 16 Ch 17	<ul style="list-style-type: none"> Submit Ch 16 & 17 questions by December 2
Week 16 December 6-10		
Weekly Activities <ul style="list-style-type: none"> Engage with course materials Reading Days December 9-10 		<ul style="list-style-type: none"> Course video reflection on course due December 6 and respond to video reflection post by December 8
Week 17 December 13-17		
Exam 3		<ul style="list-style-type: none"> Exam 3 December 14

***Subject to change and updates will be posted as needed**